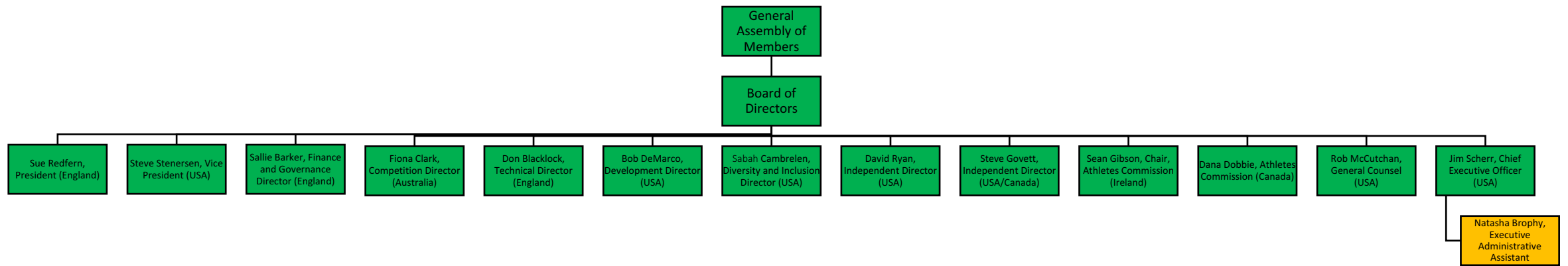


World Lacrosse Board Structure Organizational Chart

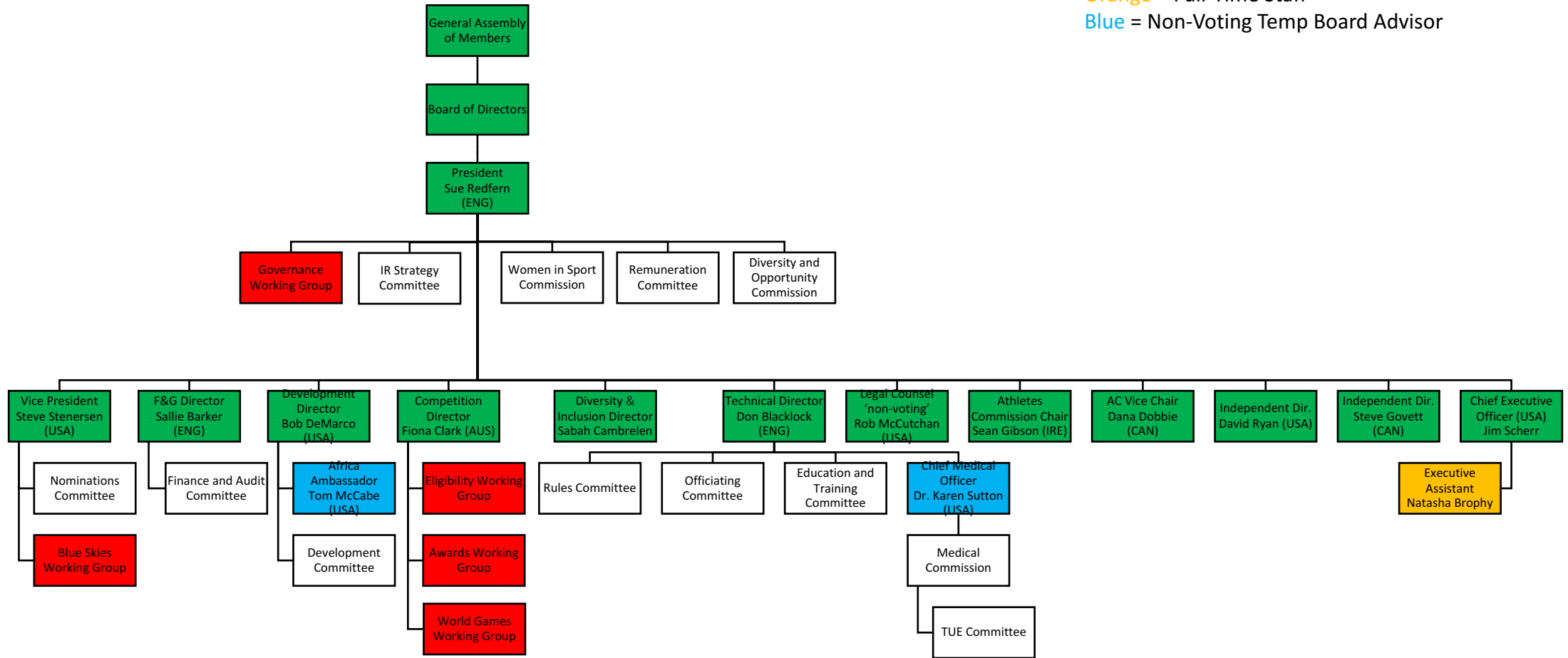
Green = Governance/Existing Board Members
 Orange = Full-Time Staff



Note: Staff in attendance at BOD meetings normally includes COO, CBCO, EAA and others relevant to the agenda

World Lacrosse Board Responsibilities Structure Chart

Green = Governance/Existing Board Members
 Red = Ad Hoc/Temp Committees
 (Ad Hoc/Working Groups are not committees)
 Orange = Full-Time Staff
 Blue = Non-Voting Temp Board Advisor



Notes:
 - Staff in attendance at BOD meetings normally includes COO, CBCO, EAA and others relevant to the agenda
 - Staff work on Working Groups as needed

World Lacrosse Staff Structure Organizational Chart

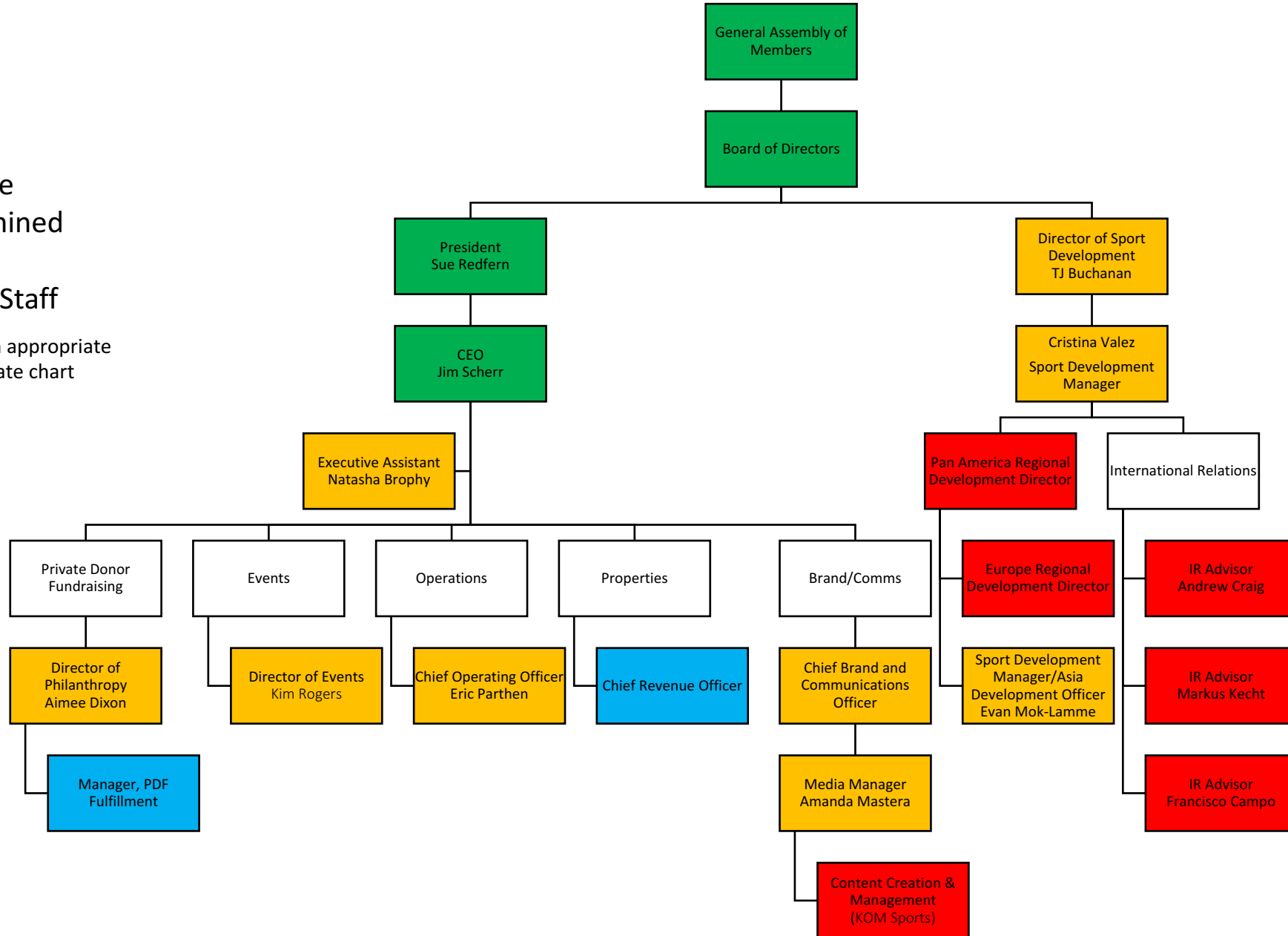
Green = Governance

Blue = To be determined

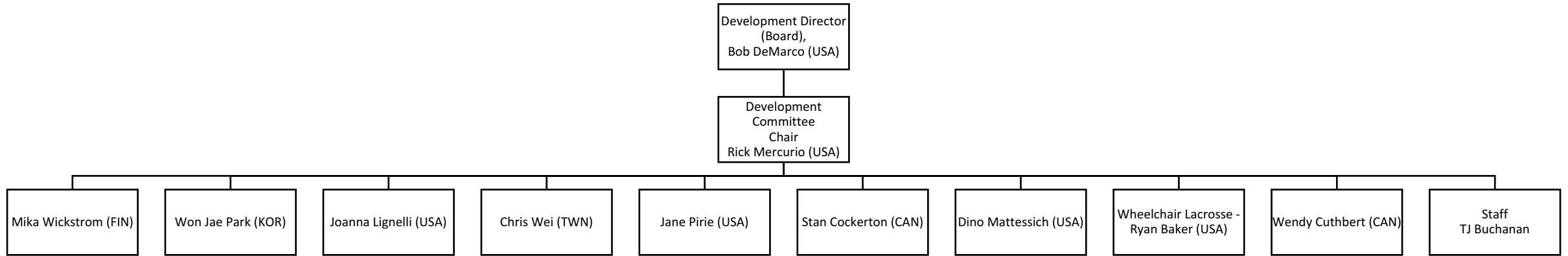
Red = Contracted

Orange = Full-Time Staff

Note: relevant staff link with appropriate committees, see each separate chart

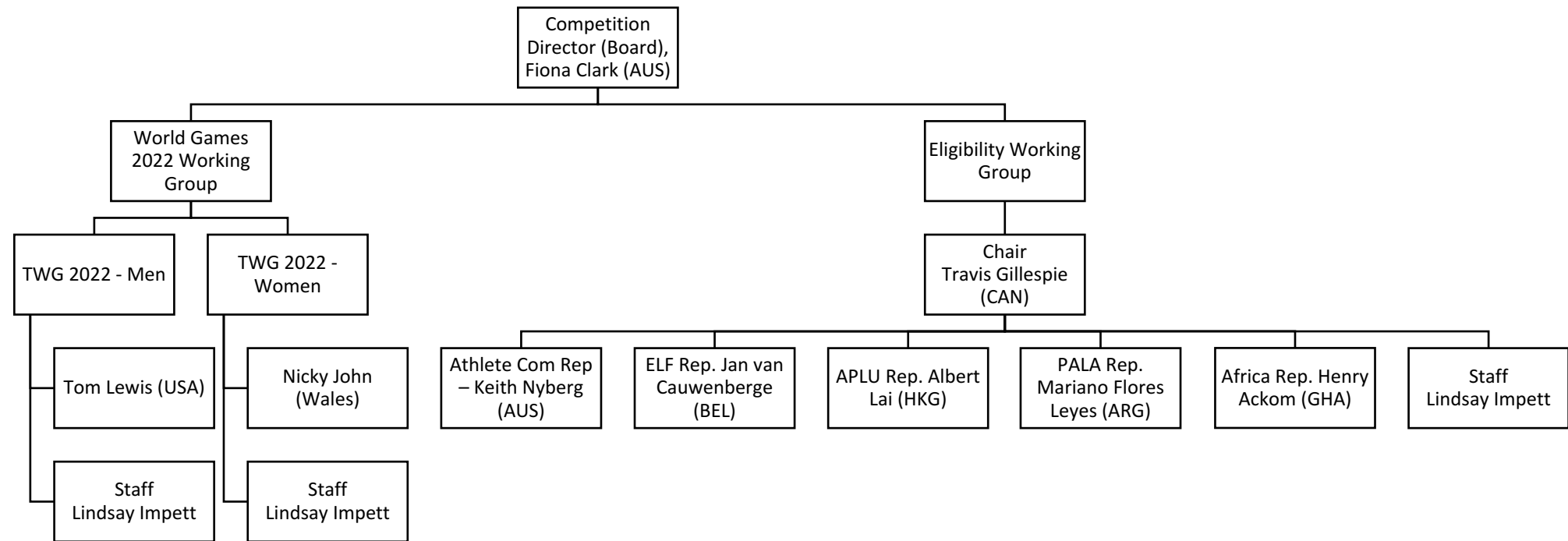


World Lacrosse Development Organizational Chart



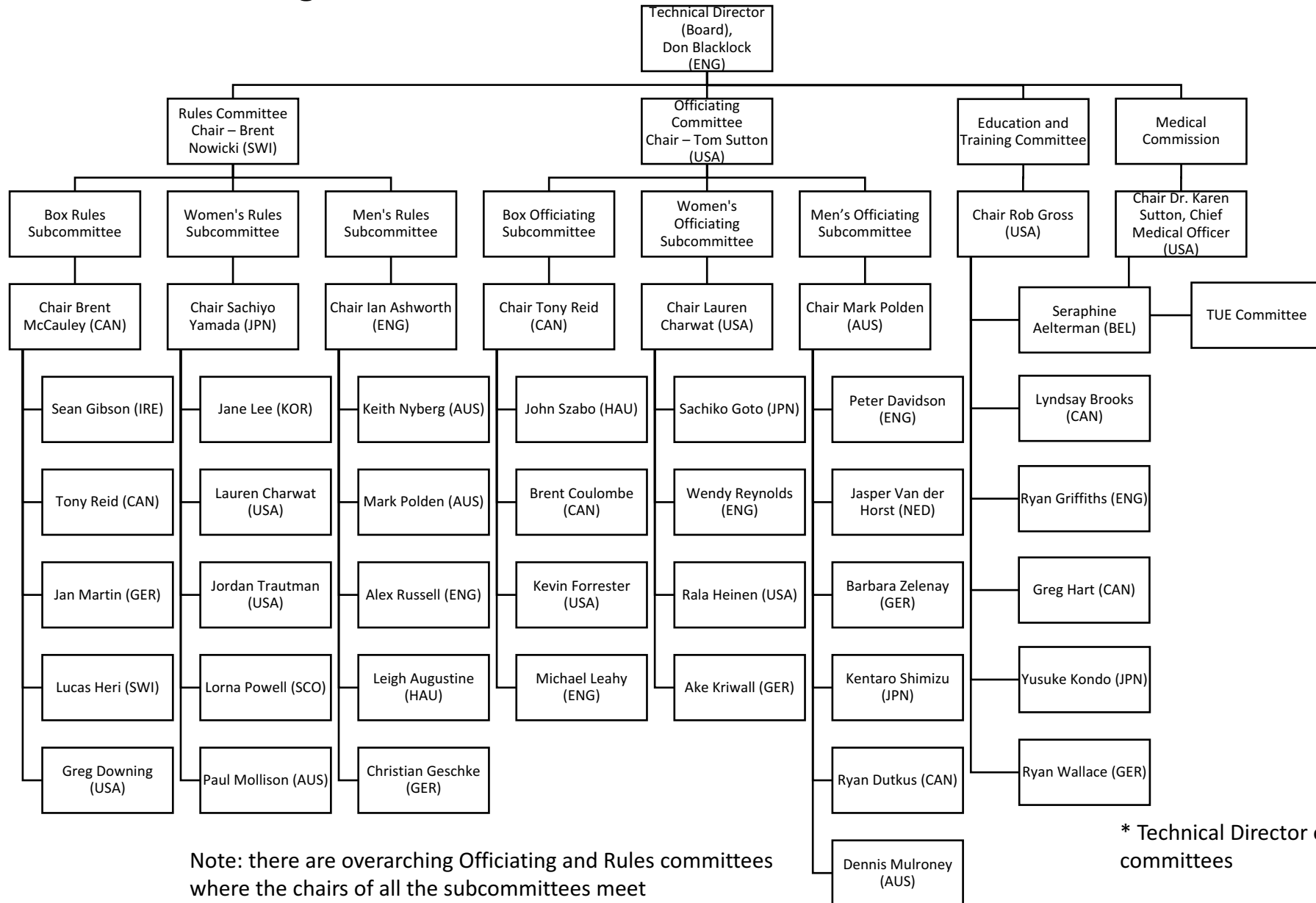
* Development Director ex-officio on all committees

World Lacrosse Competition Organizational Chart

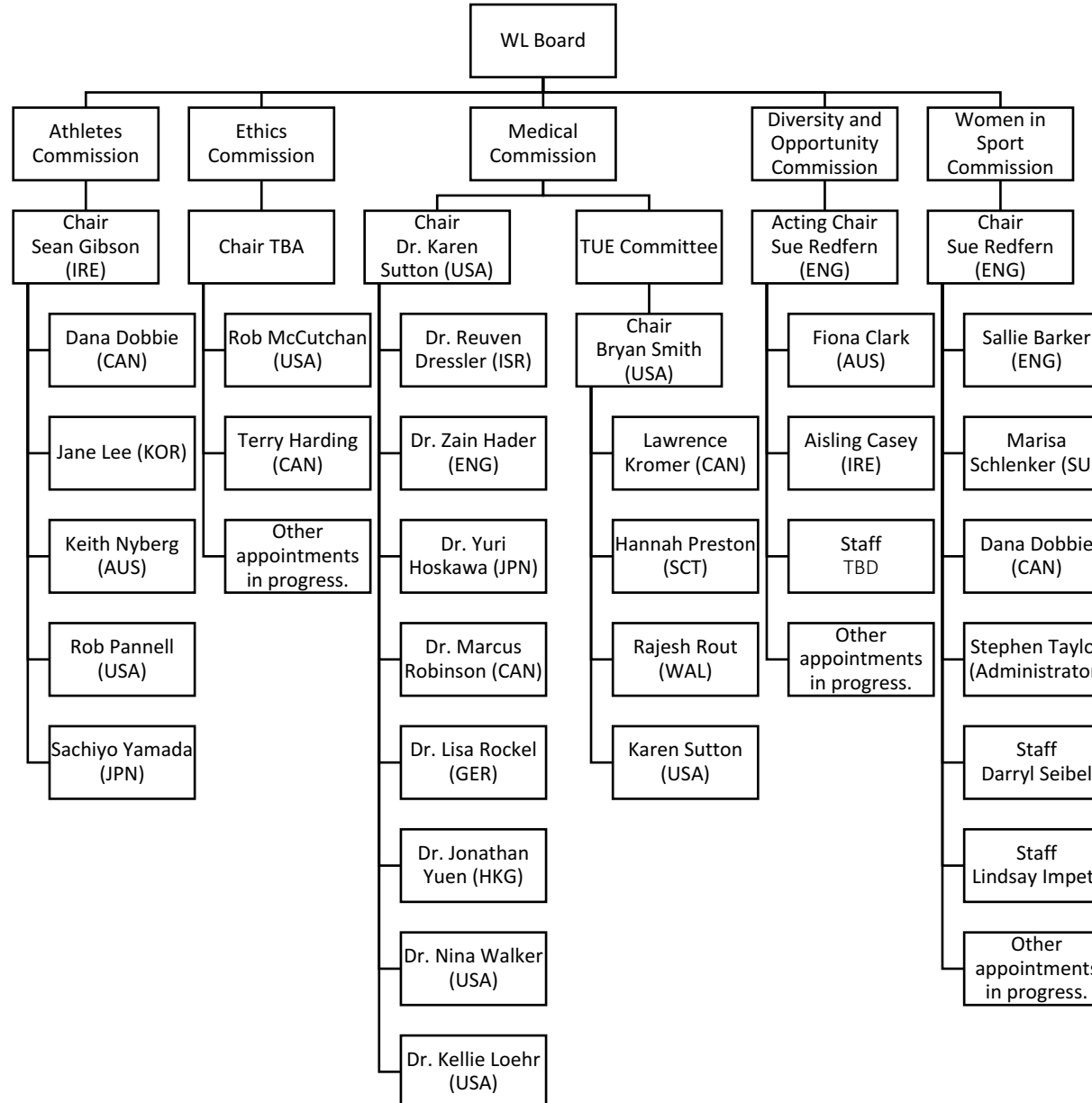


* Competition Director ex-officio on all competition groups and committees

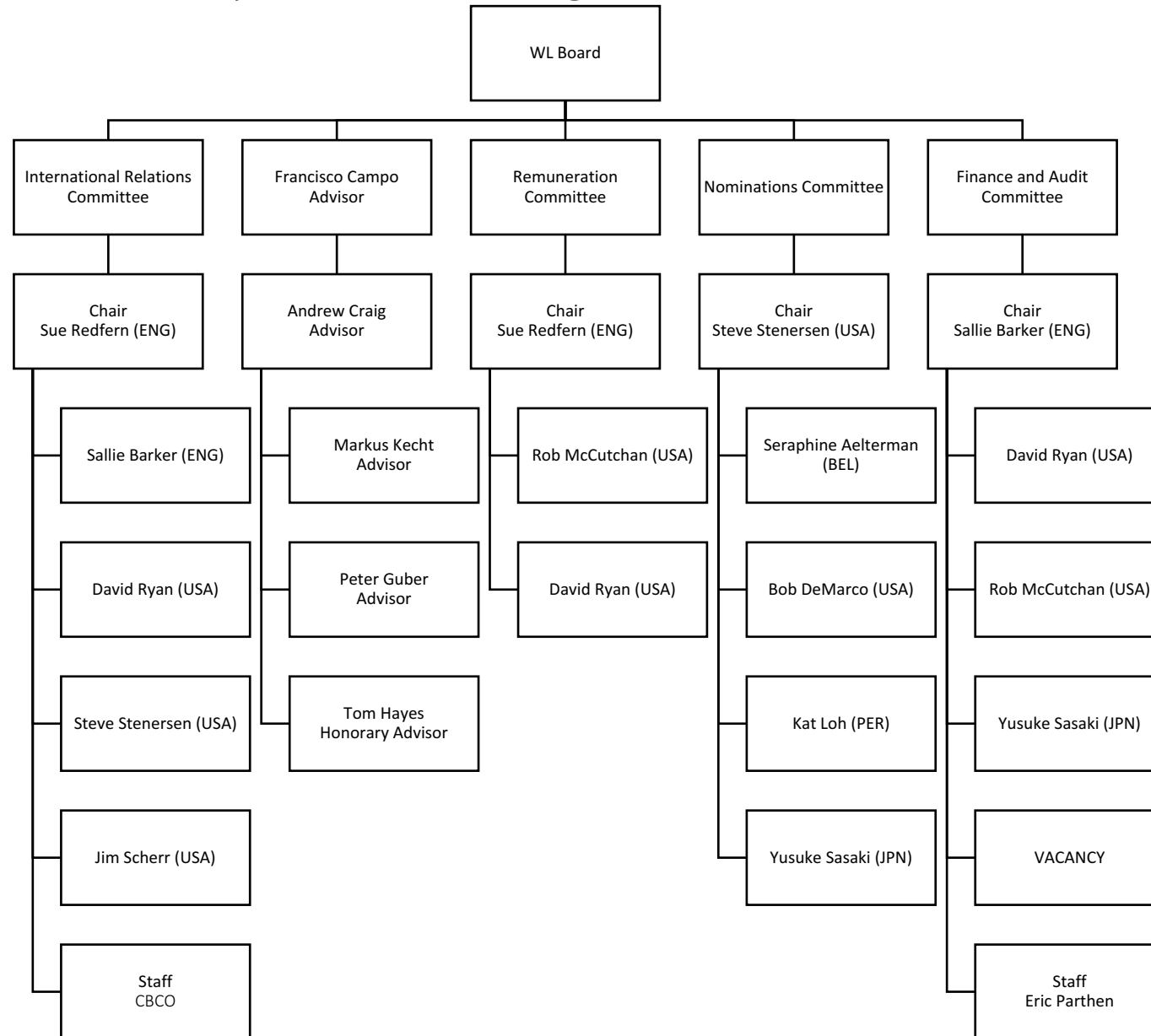
World Lacrosse Technical Organizational Chart



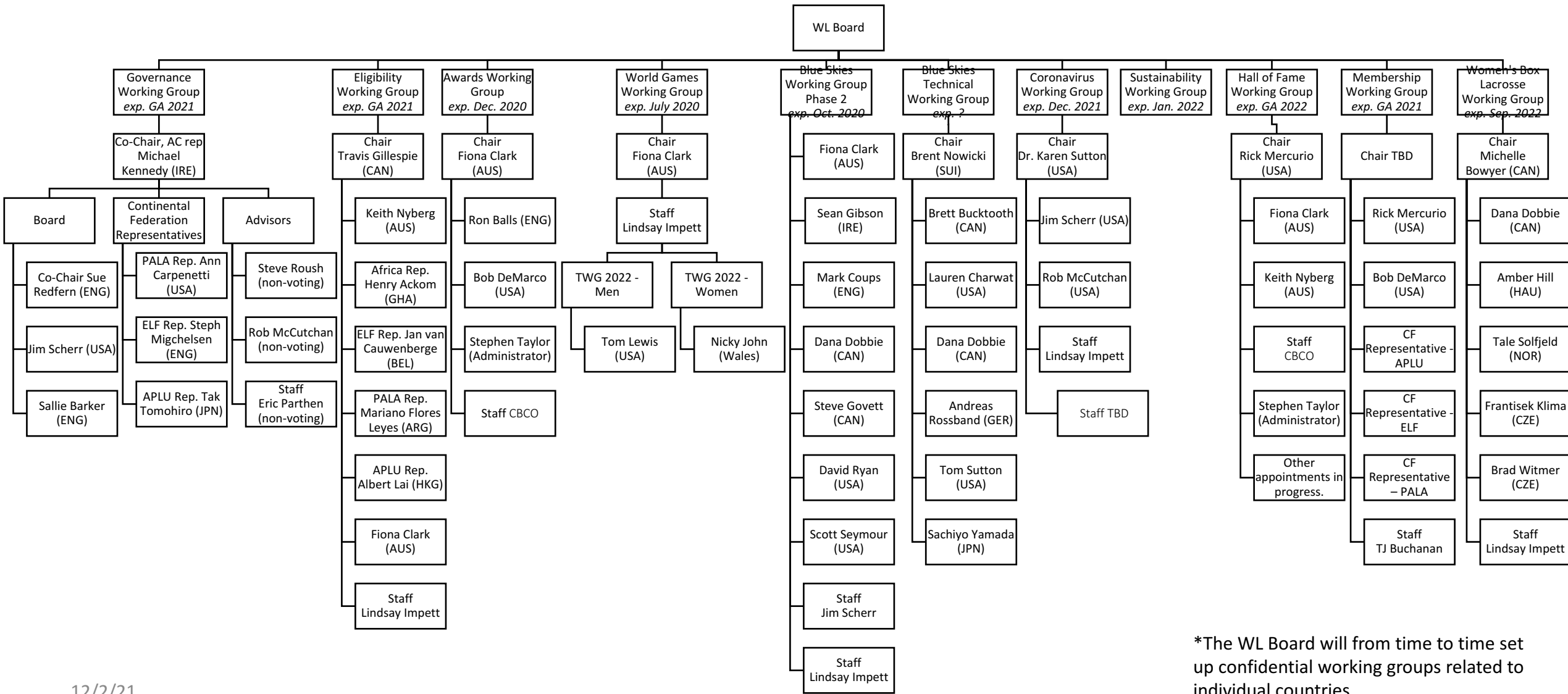
World Lacrosse Commissions Organizational Chart



World Lacrosse Board Advisory Committees Organizational Chart



World Lacrosse Working Groups Organizational Chart



*The WL Board will from time to time set up confidential working groups related to individual countries.